



# **Golden Shamrock** **Helene Ossipov**

EGA Petite Project

# Helpful links and videos

- **Tracing**

<https://www.youtube.com/watch?v=GLjwFNTkvXU>

- **Couching**

[https://www.youtube.com/watch?v=w\\_-kOaWyD9A](https://www.youtube.com/watch?v=w_-kOaWyD9A)

- **Description of Metal Threads**

[https://sites.create-cdn.net/sitefiles/19/4/8/194865/  
Gold\\_threads\\_and\\_metals\\_info\\_sheet\\_V3\\_12092019  
.pdf](https://sites.create-cdn.net/sitefiles/19/4/8/194865/Gold_threads_and_metals_info_sheet_V3_12092019.pdf)

- **The use of Bees Wax**

<https://www.needlenthread.com/2018/03/on-thread-conditioning-beeswax-for-embroidery.html>

# How to proceed

- Pick your fabric
- Organize your supplies
- Trace the pattern onto your fabric
- Mount your fabric into a hoop, stretcher bars, frame
- If you will pad, do so before stitching

# If you are padding

- Determine the number of layers.
- Trace the shape onto freezer paper which you can iron on to your felt
- Cut out the shapes and stitch onto your actual piece
  - Smallest layer first - needs to be only held in place
  - The topmost layer should be buttonhole stitched down





Smallest padding felt  
lightly couched  
with a few  
stitches



All 3 small felt pieces  
couched in place



Medium sized padding  
(middle layer) lightly couched  
to hold in place

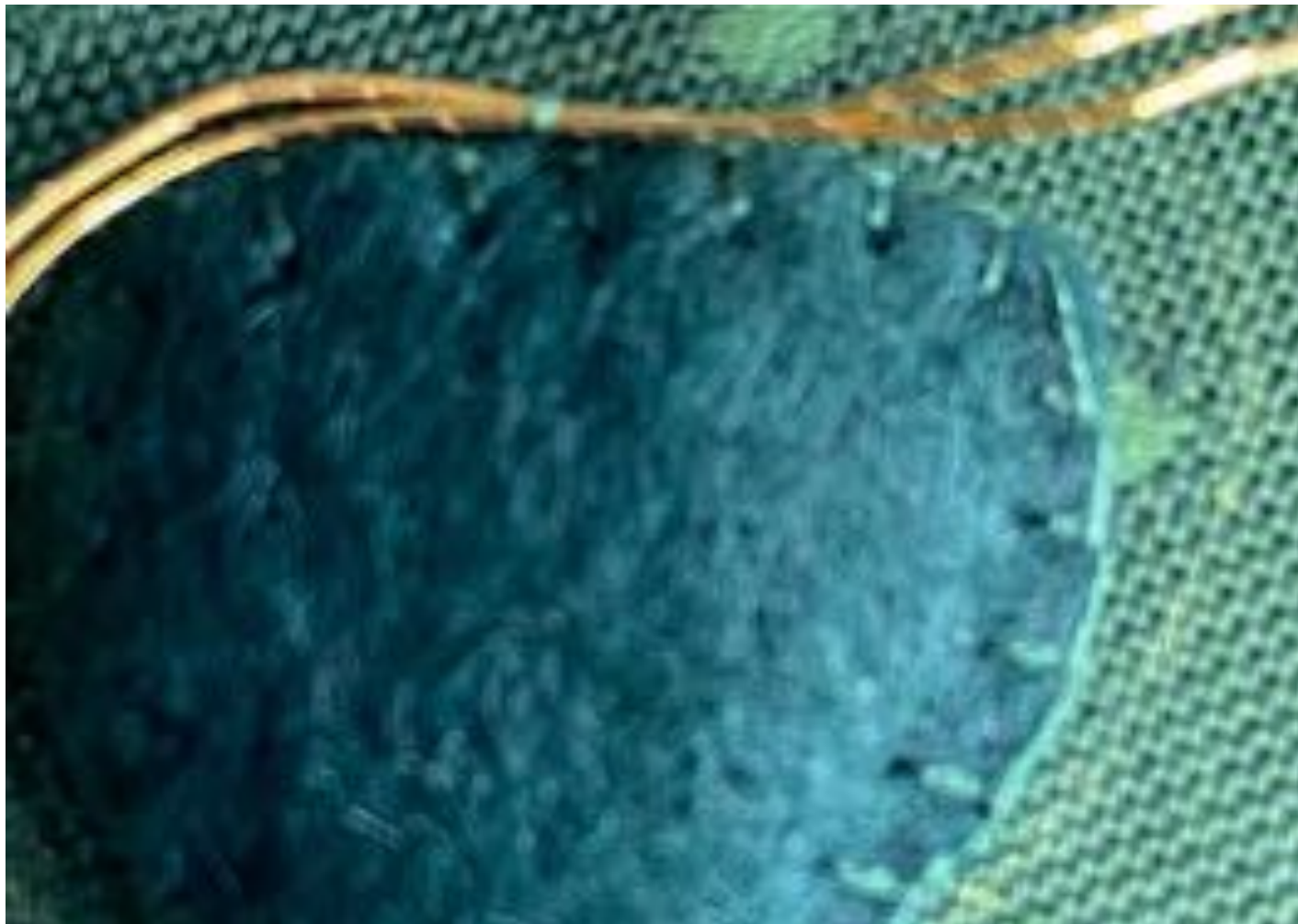




**All 3 large leaves  
buttonholed**

**Largest felt stitched in place  
and then completed with  
buttonhole couching**





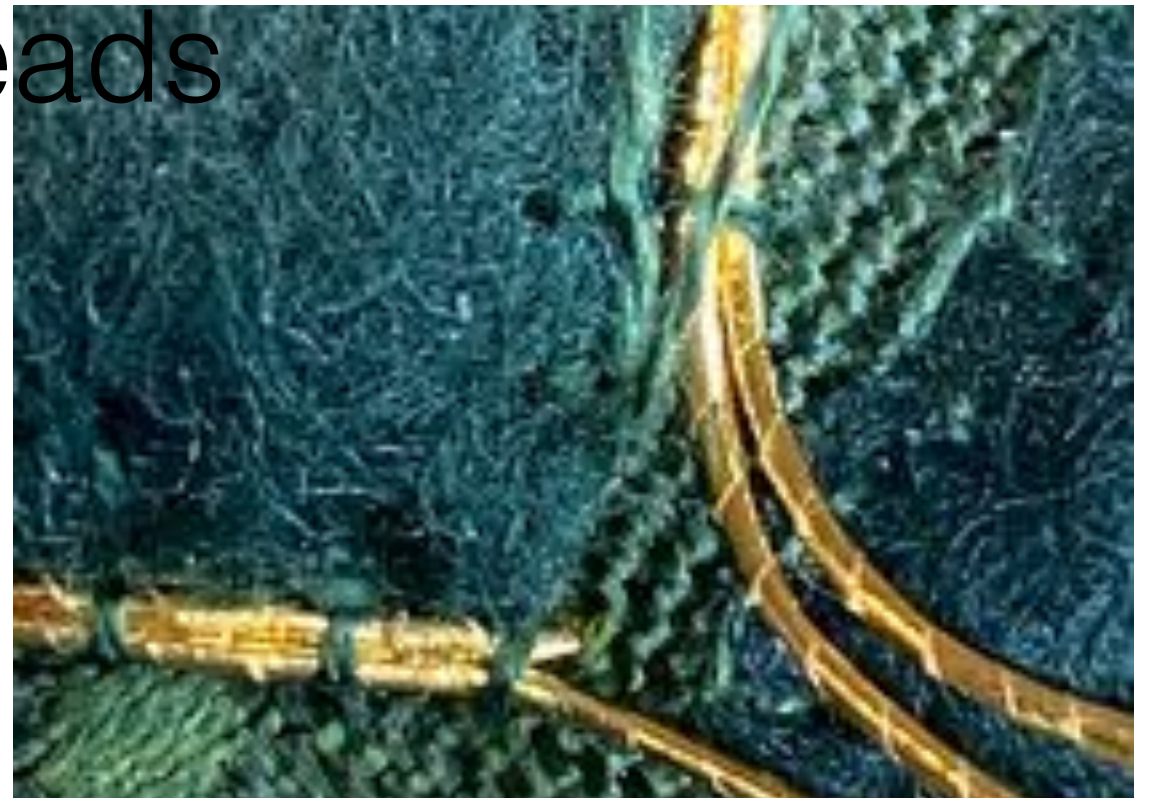
- **Helene's recommendations is to start couching in the middle of a leaf.**
- **2 gold threads are paired and couched together.**
- **Even spacing of your couching stitches makes for a pleasing look**
- **Avoid your gold threads twisting**



# Plunge your gold threads



**Japan thread in the chenille needle  
being plunged.**



**the first gold thread plunged**



**both threads plunged**





Ready to plunge



Both gold fibers have been plunged.  
The threads are pulled in the opposite direction from the way the top was stitched to tighten the slack.  
Helene recommends basting about 1" of the gold to the bottom layer.

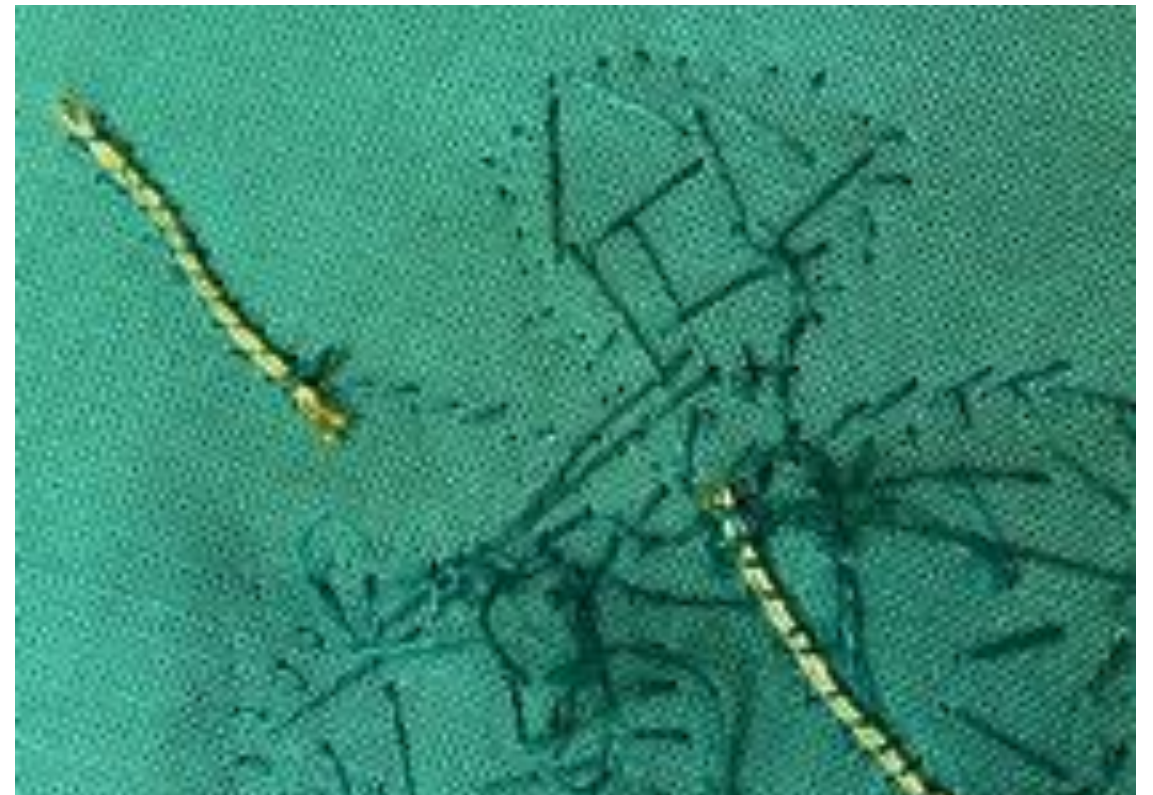


You need to make sure you don't want to see these stitches on your lovely project.





the 2nd leaf is couched in place



Plunging and fastening as you go makes for a neater work surface and few threads to have to deal with as you work the design.



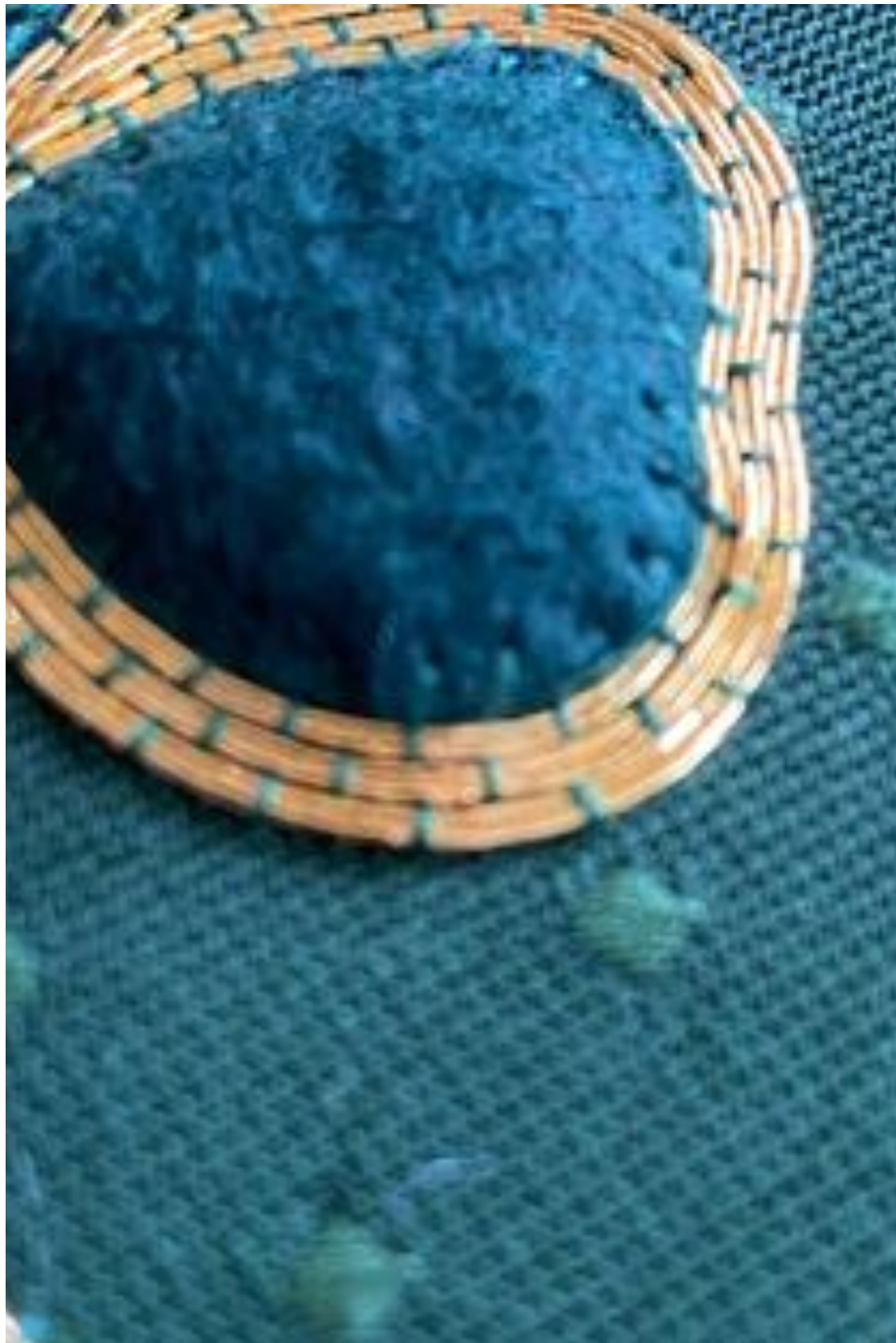


a second round of gold fibers couched around the leaves. Note that the couching threads are offset (bricked) from the first round.



Looking at the picture on the left, I knew I wanted a third row.





The back isn't pretty. But ,  
those threads aren't  
going anywhere.

The bricking is even more obvious  
with the third row.



Let your inner bling shine  
as you embellish





I purchased the box from Amazon (search for Cottage Garden Round Box). They go on sale periodically. I have never paid more than \$10 for this box.



I used an interlaced chain stitch to fill this version.